



Marie Skłodowska- Curie RISE  
MAPS-LED  
Multidisciplinary Approach to Plan Smart Specialisation Strategies  
for Local Economic Development



# LifeTech Boston Initiative

ESR Leonardo Bianchi  
Fo.Cu.S Unit

## CONTENTS

- The *LifeTech Boston* Initiative
- Life Sciences Industry Outlook
- Governance, Activities and Partnership
- Main Objectives
- Achievements and Potentiality
- Perspectives
- References



05-06.12.2016  
University of Rome “La Sapienza”, ITALY  
Department of Economic Geography

MAPS-LED “Multidisciplinary Approach to Plan Smart Specialisation Strategies for Local Economic Development” is a Marie Skłodowska-Curie RISE research project funded by the European Union’s HORIZON 2020 program for Research and Innovation under the Grant Agreement 645651

DISCLAIMER: The information appearing in this document has been prepared in good faith and represents the opinions of the authors. The authors are solely responsible for this publication and it does not represent the opinion of the European Commission or its Research Executive Agency. Neither the authors nor the European Commission or its Research Executive Agency are responsible or any use that might be made of data including opinions appearing herein.



Marie Skłodowska- Curie RISE  
MAPS-LED

Multidisciplinary Approach to Plan Smart Specialisation Strategies  
for Local Economic Development



## INITIATIVE THE *LifeTech Boston* INITIATIVE

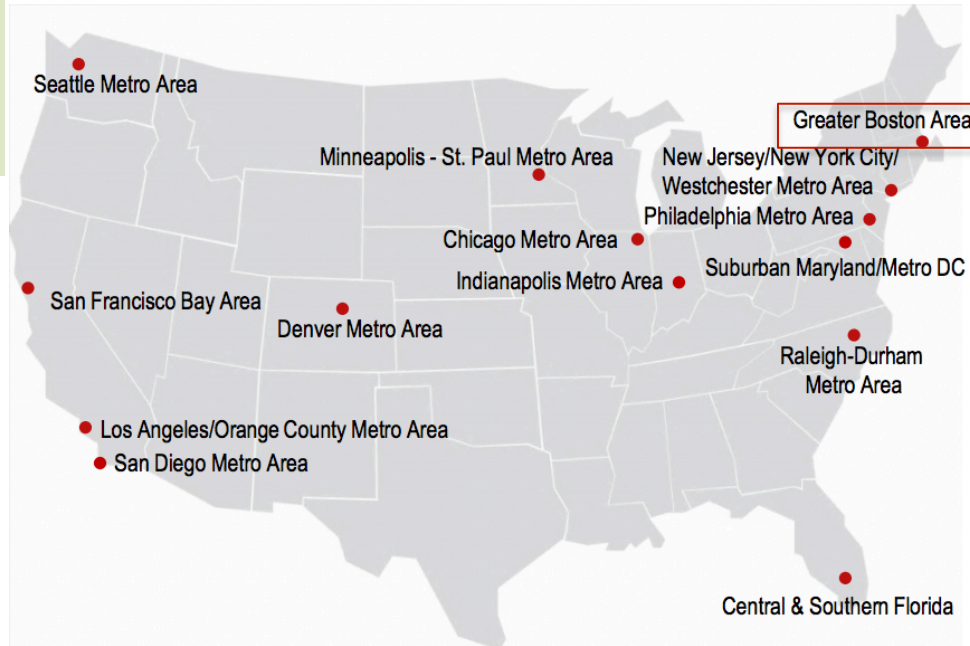


- 1 Charlestown:** Waterfront home to Massachusetts General Hospital and Spaulding Rehabilitation Hospital.
- 2 Harvard University – North Allston:** Harvard Innovation Lab, an initiative by Harvard Business School for team-based entrepreneurial activities and interactions among Harvard students, faculty, entrepreneurs
- 3 Longwood Medical Area:** Area for research, health care and academia that hosts 7 campus (Brigham & Women’s Hospital, Children’s Hospital, Dana-Faber Cancer Institute, Harvard Medical School, Harvard School of Public Health, Harvard School of Dental Medicine, Merck).
- 4 Crosstown Cluster:** Network of alliances, partnerships, collaborations, and consultantships
- 5 The City’s Innovation District:** A component of the *InnovationBoston* Strategy. In particular this initiative aims to transform 1000 acres of the South Boston waterfront into a urban environment that fosters innovation, collaboration and entrepreneurship.

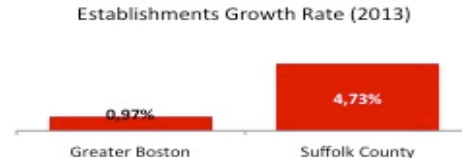
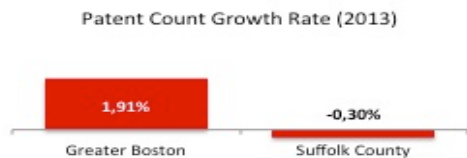
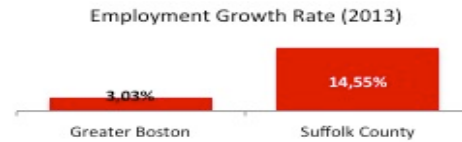
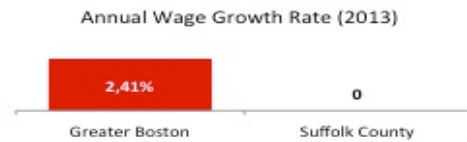


OUTLOOK

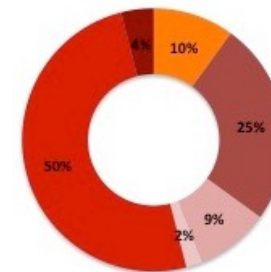
# LIFE SCIENCES INDUSTRY OUTLOOK



Cluster	Weighted Score	Rank
<b>Greater Boston Area</b>	<b>86.9</b>	<b>1</b>
San Francisco Bay Area	72.4	2
San Diego Metro Area	70.7	3
Releigh Durham	58.3	4
New Jersey/New York City	55.4	5
Los Angeles	51.5	6
Philadelphia Metro Area	50.2	7
Suburban Meryland	47.0	8
Minneapolis	44.0	9
Seattle Metro Area	40.4	10
Denver Metro Area	30.4	11
Southern Florida	23.5	12
Chicago Metro Area	18.7	13
Indianapolis Metro Area	12.9	14



Life science employment composition



- Pharma and medicine manufacturing
- Electromedical instrument manufacturing
- Medical equipment and supplies manufacturing
- Testing laboratories
- Research and development
- Medical and diagnostic laboratories



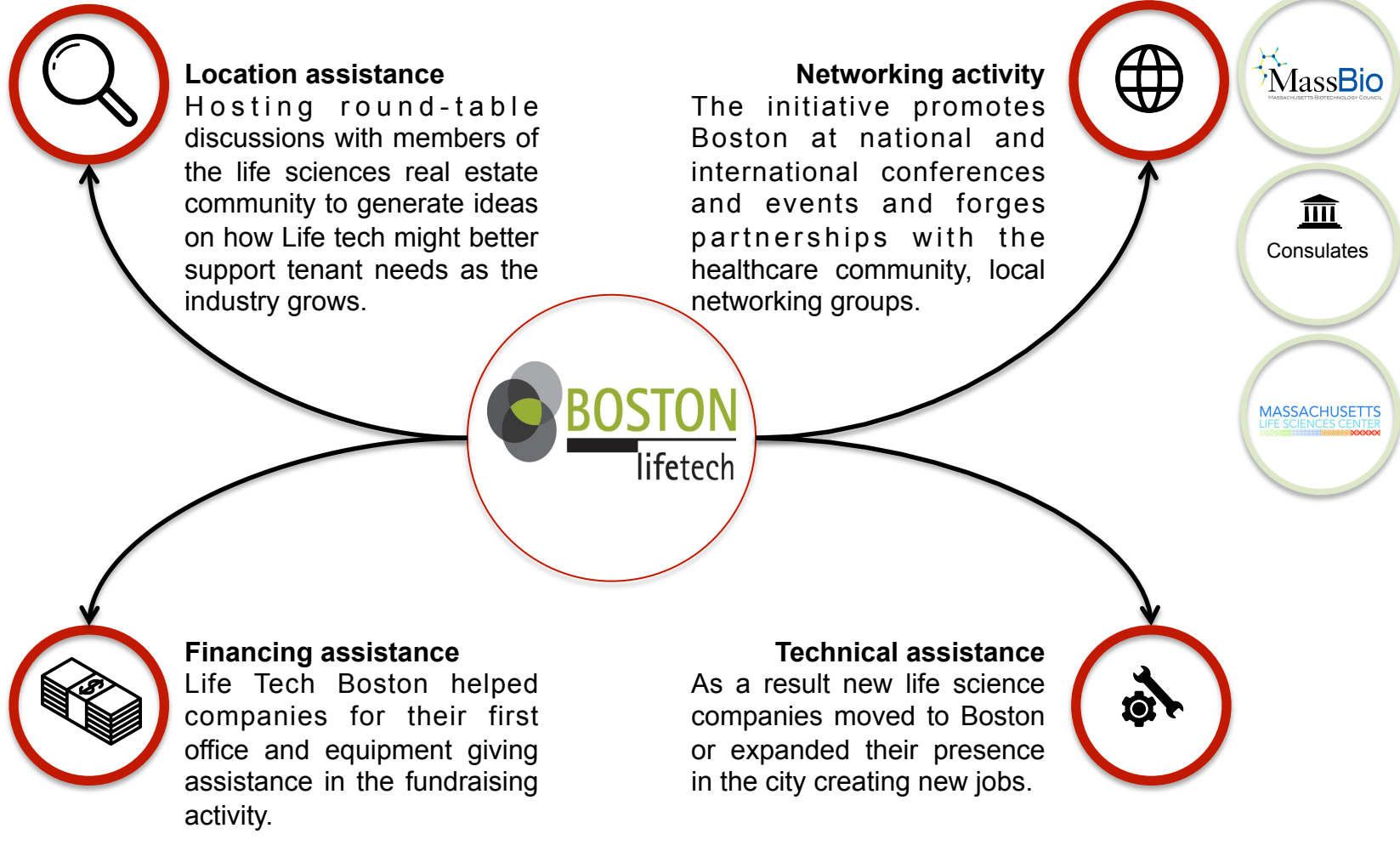
Marie Skłodowska- Curie RISE  
MAPS-LED

Multidisciplinary Approach to Plan Smart Specialisation Strategies  
for Local Economic Development



STRUCTURE

# GOVERNANCE, ACTIVITIES AND PARTNERSHIP



MAPS-LED First International Workshop  
05-06.12.2016  
University of Rome "La Sapienza", ITALY





**RESULTS** **MAIN OBJECTIVE**



**HARVARD UNIVERSITY / NORTH ALLSTON**  
 Genzyme and Harvard Business School built new spaces for laboratories and offices.



**LONGWOOD MEDICAL AREA**  
 The state of the art research facility is planned to be 414000 s.f. of laboratory, office and clinical space.

**DANA FABER**  
 has committed 154100 s.f.  
**BUILDING FOR THE FUTURE**  
 Brigham and Women's Hospital  
 259900 s.f.



**INNOVATION DISTRICT**  
**VERTEX** moved to its new headquarter of 1,1 million s.f.  
**DISTRICT HALL**, 1200 s.f. of meeting space.

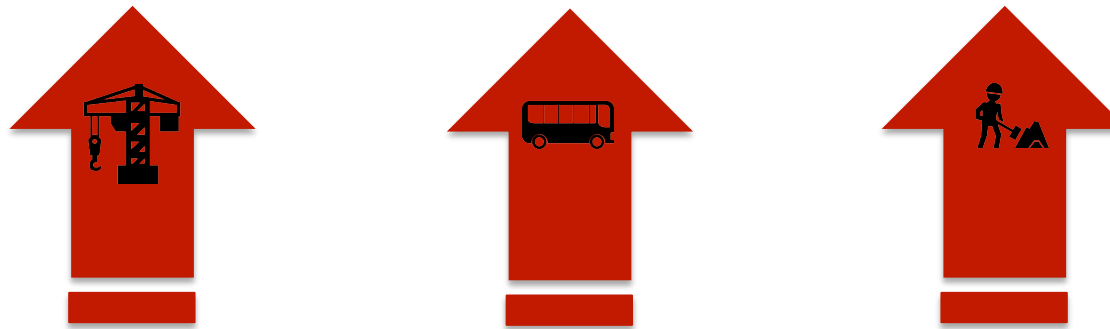
The City plans to add new spaces to the Massachusetts Convention Centre, the major anchor in the district, with a project of 1 billion dollars.



RESULTS

# ACHIEVEMENTS AND POTENTIALITY

While the suburbs have provided an alternative price point for new companies, a number of firms of life science have chosen the city for build new spaces or convert office to lab. Given its prime urban location, the City Business District continues to increase its efforts to attract more and more life science tenants.



SUPPLY	INNOVATION DISTRICT	LONGWOOD MEDICAL AREA
Rentable Lab Stock (% of total stock)	1.3M s.f. 100%	1.05M s.f. 67%
Under Construction (s.f.)	0	414000
Average asking rent	n.a.	\$ 90.00 p.s.f.



Marie Skłodowska- Curie RISE  
 MAPS-LED  
 Multidisciplinary Approach to Plan Smart Specialisation Strategies  
 for Local Economic Development

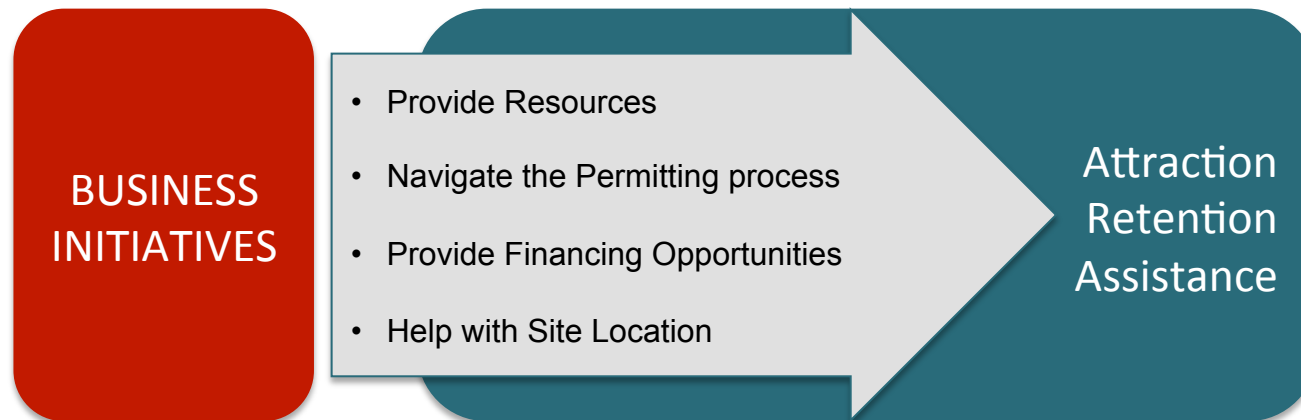


**PERSPECTIVES**

CRITICAL ISSUES



BUSINESS DEVELOPMENT DIVISION



MAPS-LED First International Workshop  
 05-06.12.2016  
 University of Rome "La Sapienza", ITALY



Marie Skłodowska-Curie RISE  
MAPS-LED  
Multidisciplinary Approach to Plan Smart Specialisation Strategies  
for Local Economic Development



REFERENCES

## REFERENCES

MAPS-LED questionnaire

[www.bostonplans.org](http://www.bostonplans.org)

[www.onein3boston.com](http://www.onein3boston.com)

[www.seaportinnovationdistrict.com](http://www.seaportinnovationdistrict.com)

[www.bostonretail.com](http://www.bostonretail.com)