

The Neighborhood Innovation District

ESR Nicole del Re
Fo.Cu.S unit

Contents:

1. *Background to Neighborhood Innovation District in Upper Roxbury*
2. *Peculiarity of the Case Study and Relevance Features for the EU contest*
3. *Initiative Structures and Governance*
4. *Main objectives and Potentiality*
5. *Critical issues and Perspectives*
6. *Interviews, References and Web Sites*



**FIRST INTERNATIONAL WORKSHOP IN ROME,
5-6 DECEMBER 2016**

**Innovation & Knowledge for Implementing Smart Strategies in the European Union
The lesson of the Boston Area**

Neighborhood Characteristics

Impact in Upper Roxbury

Dudley Square-Uphams Corridor

Neighborhood Innovation District (NID)

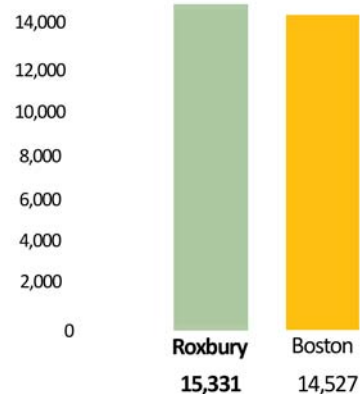
Median Household Income

Annual Income

Roxbury \$ 30,654

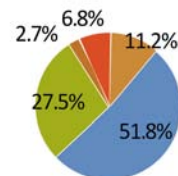
Boston \$ 52,433 in
Census 2010

Density



Race

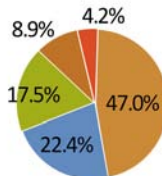
Roxbury
59,790 inhab.



Black/African American

White

Boston
617,594 inhab.



Hispanic/Latino

Asian/Pacific islanders

Other

Source: Census Bureau 2000, 2010
BRA, Roxbury Straiteig Masterplan Oversight Committee 2016



ESR Nicole del Re

Unit Fo.Cu.S.

Marie Curie ER/ESR – MAPS_LED Project

MAPS-LED

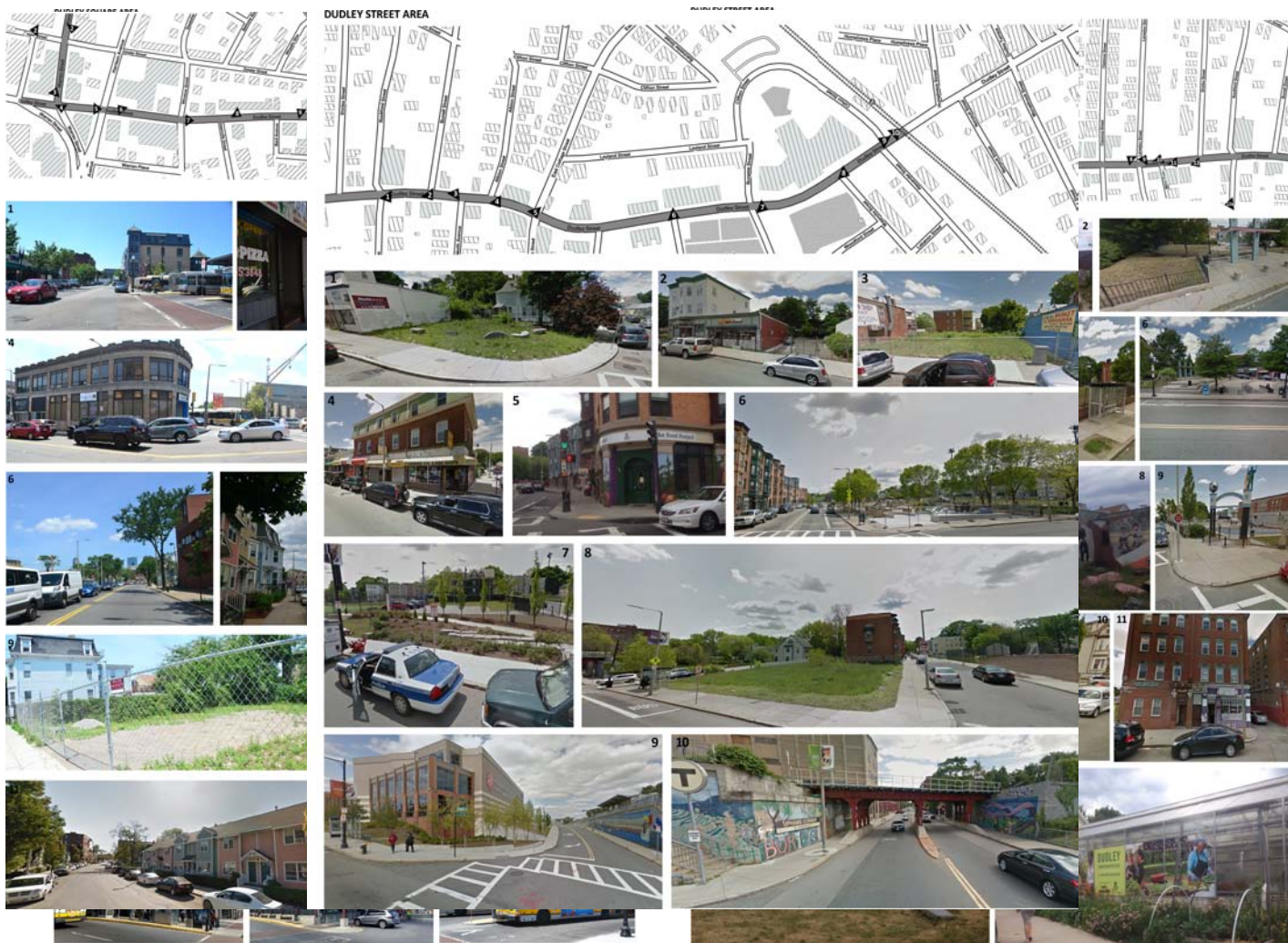
FIRST INTERNATIONAL WORKSHOP IN ROME,

Innovation & Knowledge for Implementing Smart Strategies in the European Union. The lesson of the Boston Area

12.05.2016

Sapienza University of Rome, Rome, ITALY

Marie Skłodowska-Curie RISE MAPS-LED Multidisciplinary Approach to Plan Smart Specialisation Strategies for Local Economic Development



ESR Nicole del Re
Unit Fo.Cu.S.

Marie Curie ER/ESR – MAPS_LED Project

MAPS-LED
FIRST INTERNATIONAL WORKSHOP IN ROME,
Innovation & Knowledge for Implementing Smart Strategies in the European Union. The lesson of the Boston Area
12.05.2016
Sapienza University of Rome, Rome, ITALY

2 Peculiarity of the Case Study and Relevance Features for the EU contest

TOOLS AND INNOVATIVE ASPECTS OF THE STRATEGY



INVESTING IN PEOPLE
Entrepreneurship training



NO BIG COMPANY
from outside the neighborhood
Create local community organizer



PUBLIC ROLE
Rethink and facilitate regulations for entrepreneurs



REDUCE ECONOMIC INEQUALITIES
By providing more opportunities for Local entrepreneurs



INCLUSIVENESS
of the neighborhood in the whole process



“LISTENING TOURS” WITH RESIDENTS
To find the pilot area
INVEST IN HUMAN CAPITAL
To boost professional programmes



INFRASTRUCTURE
To match with human need:
• affordable space
• accessibility
• internet



DELIVERING PUBLICLY-ACCESSIBLE BUSINESS SPACE

REDUCING DISPLACEMENT
District Housing Plan, participatory planning

ESR Nicole del Re
Unit Fo.Cu.S.

Marie Curie ER/ESR – MAPS_LED Project



RELEVANT ASPECTS FOR THE EU

EU looks at the **Smart Strategy ‘American model’ EUROPE 2020**

To fill
TECNOLOGICAL GAP

THE NID proposes a non-technological innovation approach



Correspondence with Europe and Italy

Small to Medium Enterprises
Food retail
Culture and Human Capital

MAPS-LED

FIRST INTERNATIONAL WORKSHOP IN ROME,

Innovation & Knowledge for Implementing Smart Strategies in the European Union. The lesson of the Boston Area

12.05.2016

Sapienza University of Rome, Rome, ITALY

3 Initiative Structure and Governance

Mayor **Martin J. Walsh**



Neighborhood Innovation District COMMITTEE

Chaired by

• Chief of Economic Development
John Barros

• Professor of Economy, Harvard University
Edward Glaeser

25 within:
Local Leaders,
Representatives of Community-based Organizations
Representatives of the City
Business Experts

4 SUB-COMMITTEES

*Encouraging
Entrepreneurship*

Inclusion

Infrastructure

*Neighborhood
Choice*

Neighborhood Innovation
District Committee
Report & Recommendation, 2015

1 SECTION

GENERAL RECOMMENDATIONS
*to build an Innovation District in
an existing low-income neighborhood*

2 SECTION

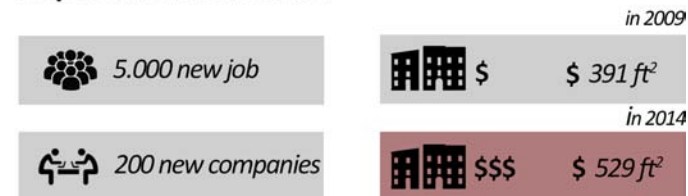
IDENTIFICATION OF A PILOT AREA
in Boston: UPPER ROXBURY

4 Main objectives and Potentiality

1 NID EXPANDS THE NOTION OF TRADITIONAL INNOVATION DISTRICTS :
TAKE INTO ACCOUNT NOT ONLY ECONOMICS PROCESSES BUT ALSO
SOCIAL DYNAMICS RELATED TO A NEIGHBORHOOD ECONOMIC DEVELOPMENT.

**2 NID WANTS TO CONTRAST THE SOCIO-ECONOMIC DYNAMICS LINKED TO
REAL ESTATE DEVELOPMENT**
THAT USUALLY DISADVANTAGED THE LOCAL COMMUNITY AND BENEFITED
THE PROFIT-MAKING SPECULATORS

Seaport Innovation District



3 NID RECOMMENDS A PARTICIPATORY PLANNING PROCESS
TO ENSURE A COMMERCIAL AND RESIDENTIAL REAL ESTATE MIXTURES IN
ACCORDANCE WITH COMMUNITY NEEDS.

4 NETWORKING WITH COMMUNITY ,CITY AND EDUCATIONAL INSTITUTIONS
THAT WILL INVEST EFFORTS IN BOOSTING THE SKILLS THAT A LOW-INCOME
NEIGHBORHOOD INNOVATION DISTRICT HAS TO DEVELOP IN ORDER TO SUCCEED

5 Critical issues and Perspectives

**NID COMMITTEE
DISSOLVED ONE YEAR AGO**



STRATEGY HAS STILL NOT BEEN IMPLEMENTED

Long time compared with the fast development
occurred in the Seaport Innovation District



**ONLY PUBLIC ADMINISTRATION IS FINANCING
THE INITIATIVE**

Renovation of the bus station, new police station,
Roxbury Innovation District R and the
Boston Public School headquarters



**DIFFICULTY TO FIND VENTURE CAPITALIST AND
ANGEL INVESTOR AS WELL AS START-UPS PROGRAMS**

They prefer more competitive environment such
as the Seaport Innovation District



**DISCRIMINATORY BARRIERS THAT MINORITY
FACES IN BEING INVOLVED IN BOSTON ECONOMY**

Roxbury is one of the poorest neighborhoods of the
city and it is mainly composed by Afro-American
and Latinos

6 Interviews, References and Web Sites:

Interviews

Professor Bill Dickens

Economic Department
Northeastern University

Member of the Neighborhood
Innovation District Committee



Kevin Wiant

Executive Director Ventur Café

Chief of Roxbury Innovation Center



Austin Nijhuis

Senior Research Analyst ICIC,
Inner City Capital Connections
located in Roxbury



References

NEIGHBORHOOD INNOVATION DISTRICT COMMITTEE (2015).
*Neighborhood Innovation District Committee.
Report & Recommendation as submitted to Mayor Martin J. Walsh.
Independent Report.*

KATZ, B., WAGNER, J. (2014).
*The Rise of Innovation District: A New Geography of Innovation
in America.* Washington: Brookings Institution

GLAESER, E., KERR, W., PONZETTO, G. (2010).
Clusters of Entrepreneurship, Journal of Urban Economics,
Vol. 67 No. 1, pp. 150-168.

GLAESER, E., KERR, W. (2009).
*Local Industrial Conditions and Entrepreneurship:
How Much of the Spatial Distribution Can We Explain?,
Journal of Economics and Management Strategy,*
Vol. 18 No. 3, pp. 623-663.

COHEN, A. (2009).
*Boston's Innovation District: A Case Study of Cross-Sector
Collaboration and Public Entrepreneurship.
The Intersector Project. Independent Report.*

Web Site

www.bostonredevelopmentauthority.org

www.roxburynnovationcenter.org

www.skylabboston.org

www.cityofboston.gov

www.census.gov

www.dsni.org

www.icic.org

Thank's for your attention